

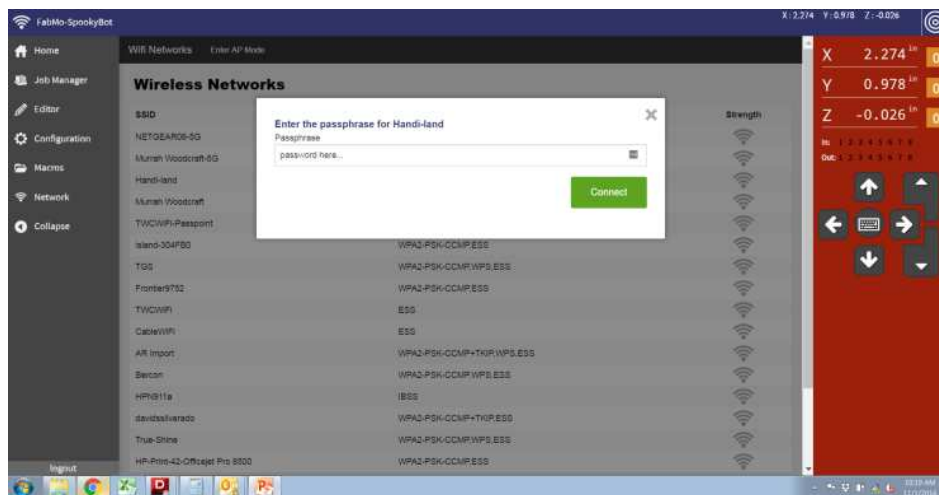
# handibot<sup>®</sup>

smart power tool

## Connecting to Network Through Updater

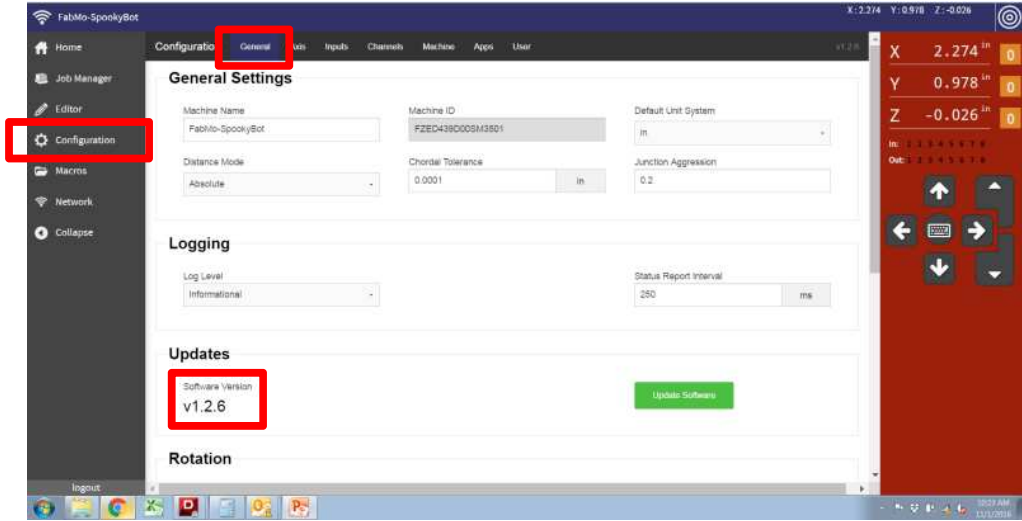
1

Recent browser security updates have made it difficult to join your tool to a network through the FabMo Dashboard. To download the update that will fix this error, you'll need to use an alternative method to get your tool online to download the patch.



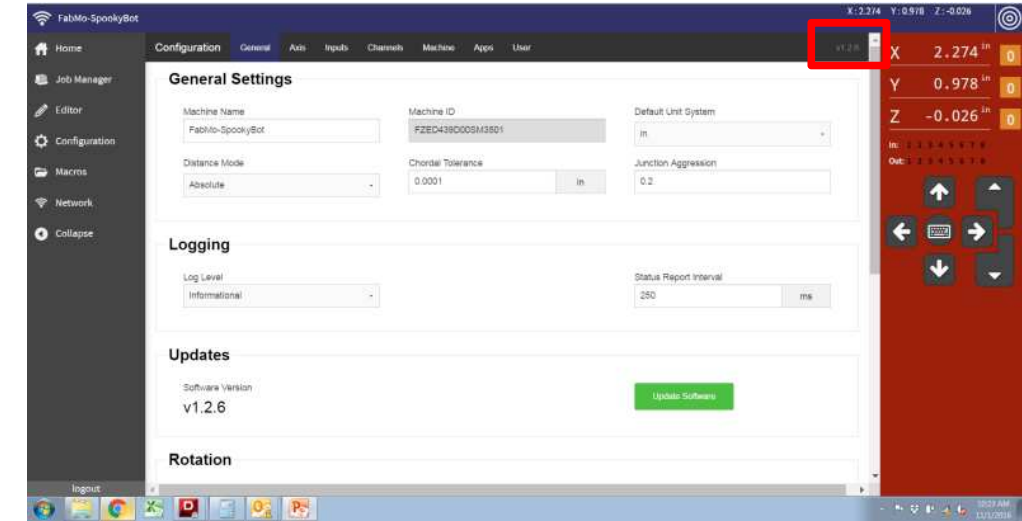
2

In the “Configuration” menu, on the “General” tab, you’ll find the current version number of your software, if it is lower than v1.2.6, you might be experiencing connection problems.



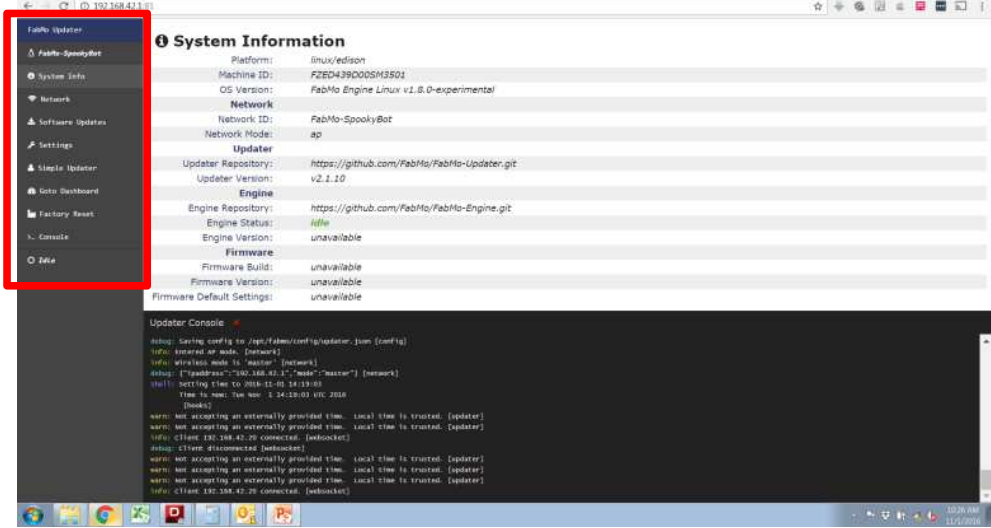
3

Click on the light grey version number at the top right of the Configuration screen to switch to the FabMo updater. This will allow you to connect to the internet and perform the update.



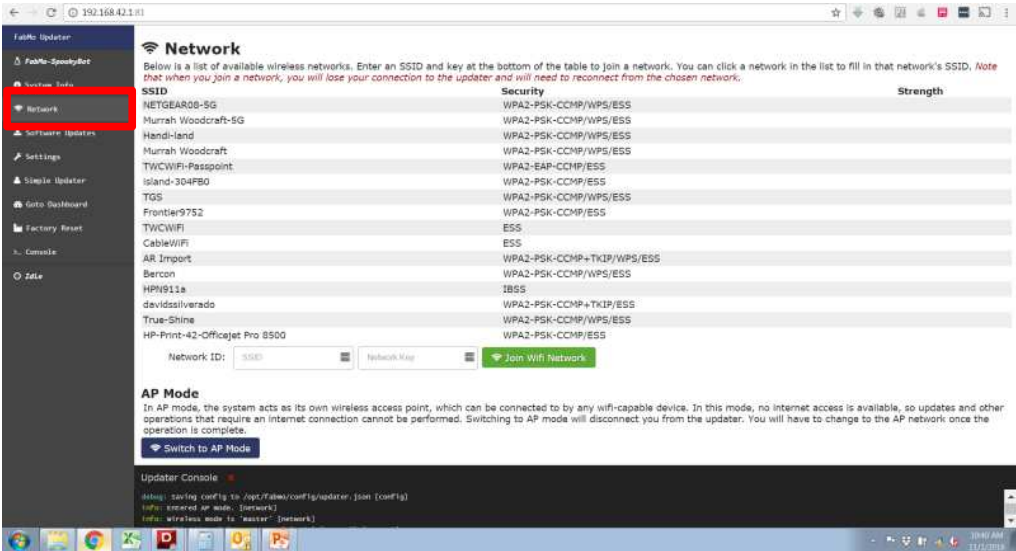
4

The FabMo Updater should appear in your browser window. There is a toolbar on the left similar to the one on the FabMo dashboard.



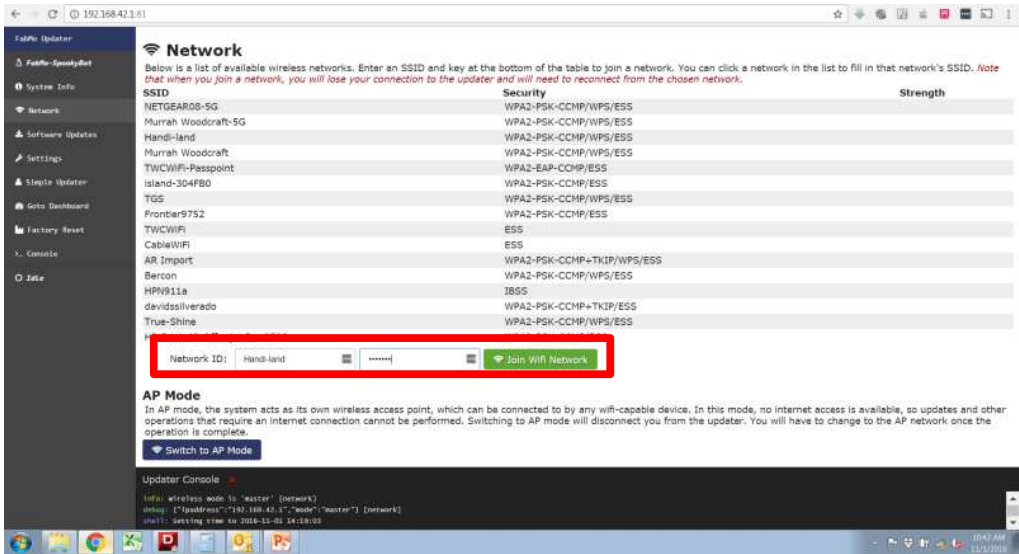
5

Clicking the “Network” button will bring up a list of available wifi connections for your tool. If your network doesn’t appear right away, refresh the page



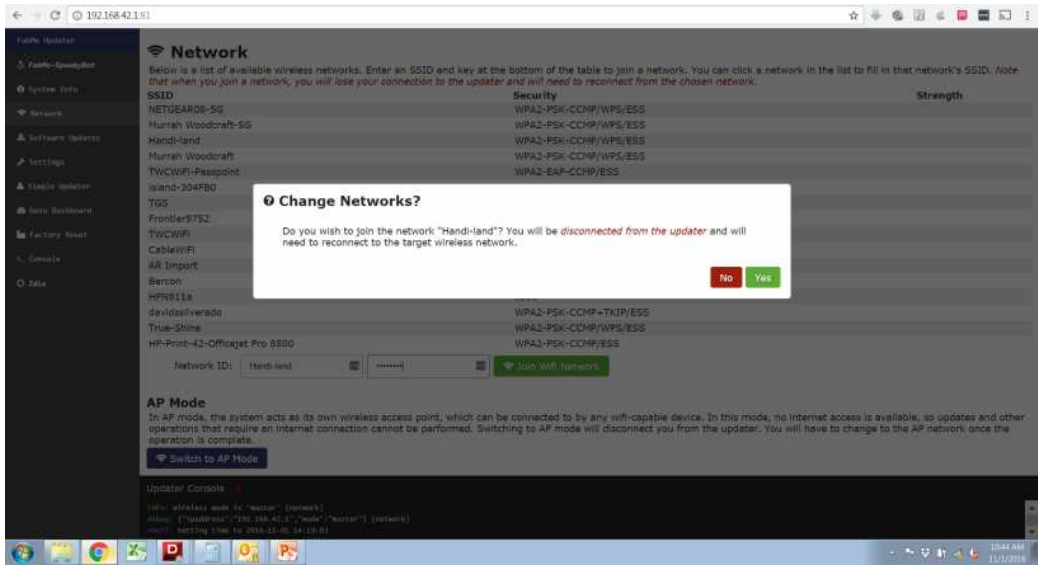
6

Choose your preferred wifi network, enter your password and click the green “Join Wifi Network” button.



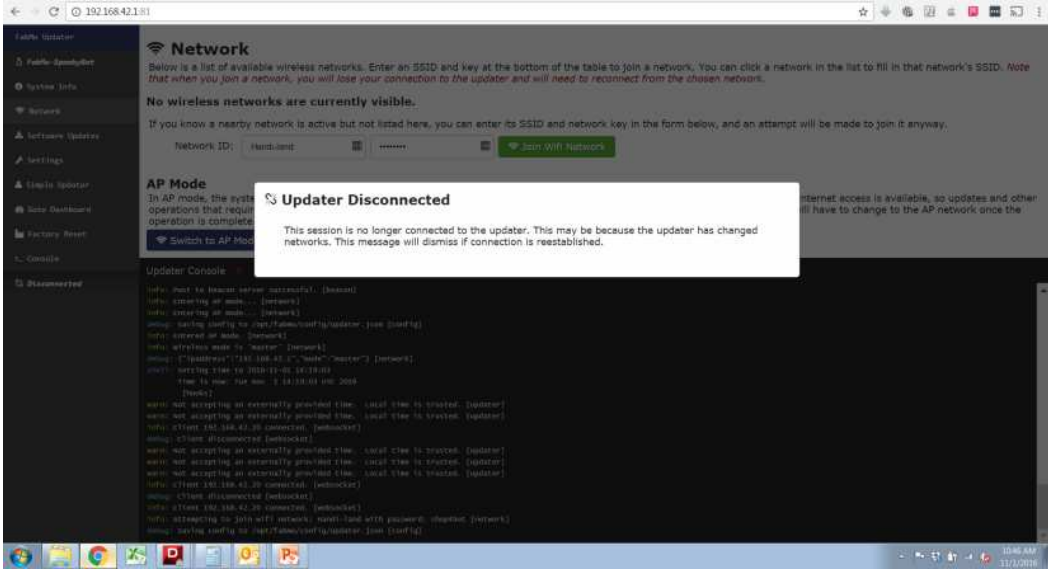
7

Answer “Yes” to the pop-up dialog box.



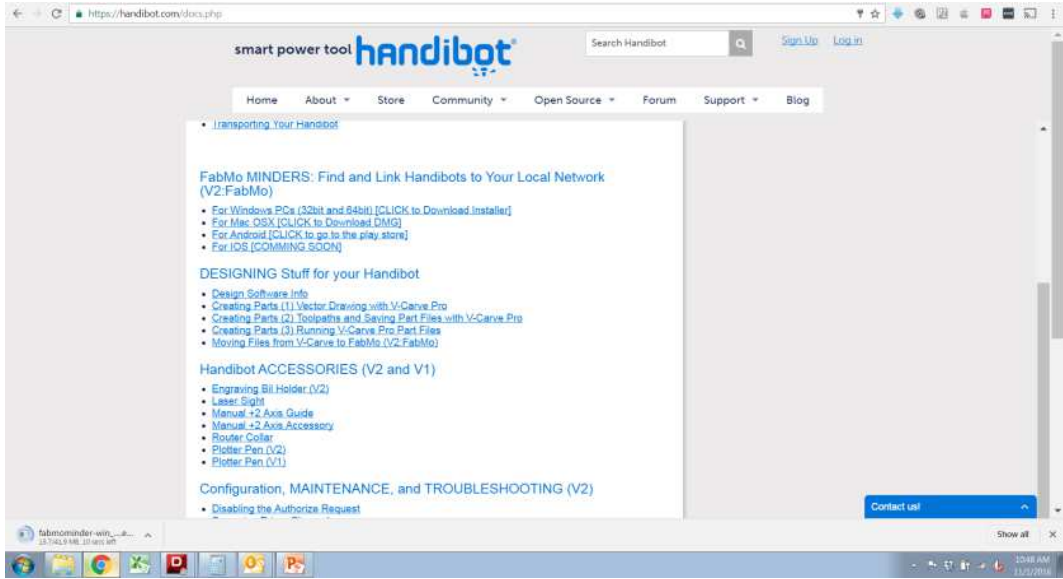
8

You'll receive a message informing you that the updater has disconnected, which means that your tool should now be available on your wifi network. Rejoin your computer to your wifi network.



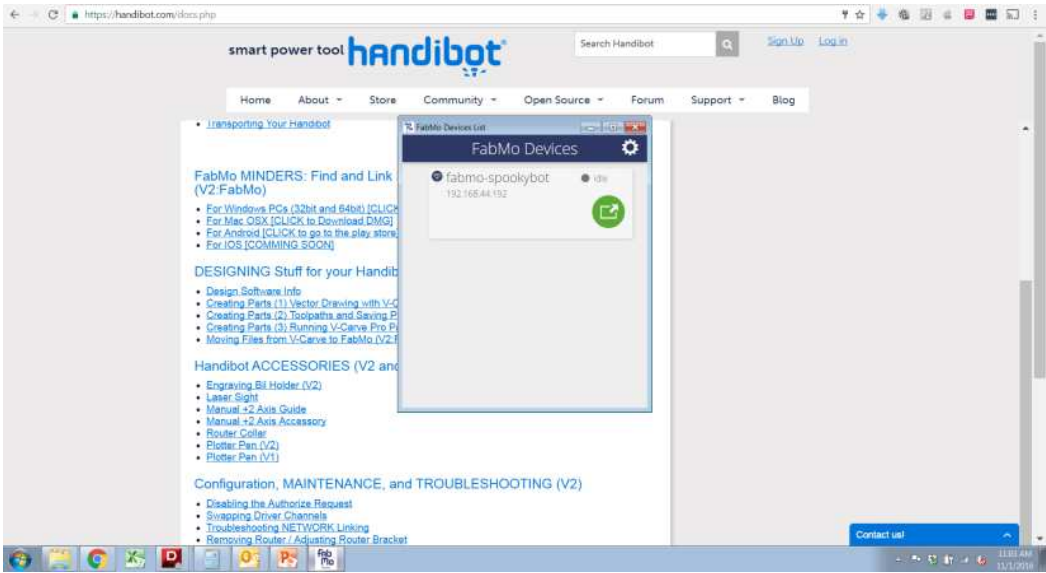
9

To locate your tool on the network, you'll need to find its IP address. The easiest way to do that is with the FabMo Minder, available on the handibot docs page ([handibot.com/docs](http://handibot.com/docs))



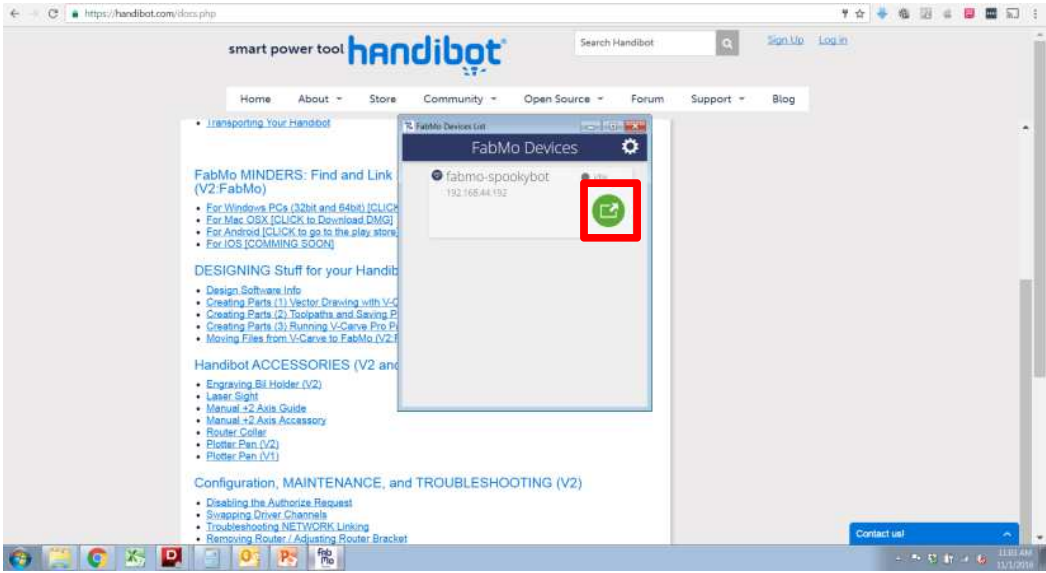
10

After a brief search, the FabMo Minder should be able to locate your tool. If your tool doesn't appear, move it closer to your wireless router and try to connect again following steps 1-9.



11

Once you find your tool, click the green button to open the FabMo dashboard in your browser.



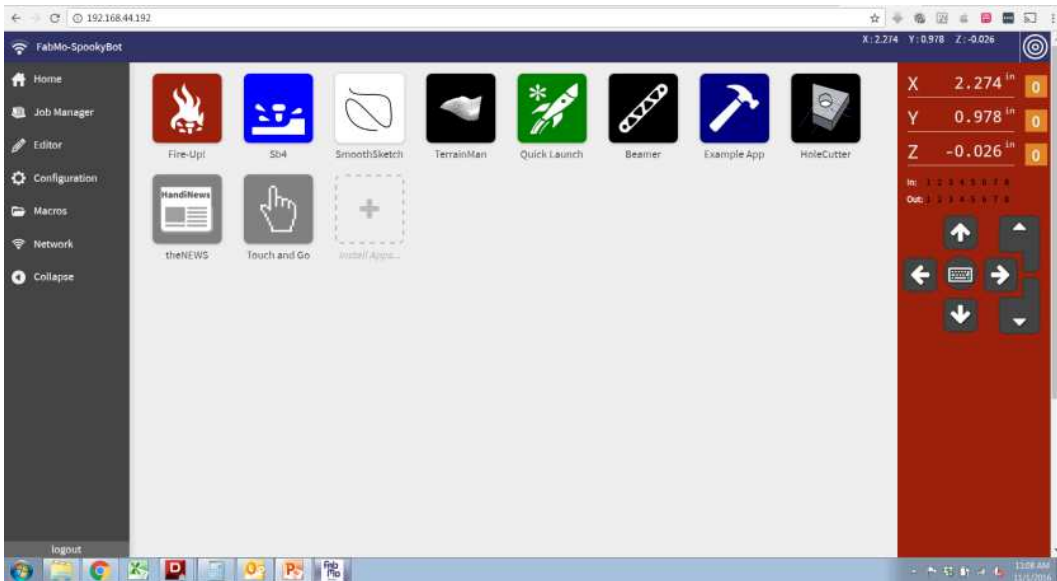
12

Log in with the usual “admin/go2fabmo” username and password.



13

This should bring you back to the normal FabMo dashboard.

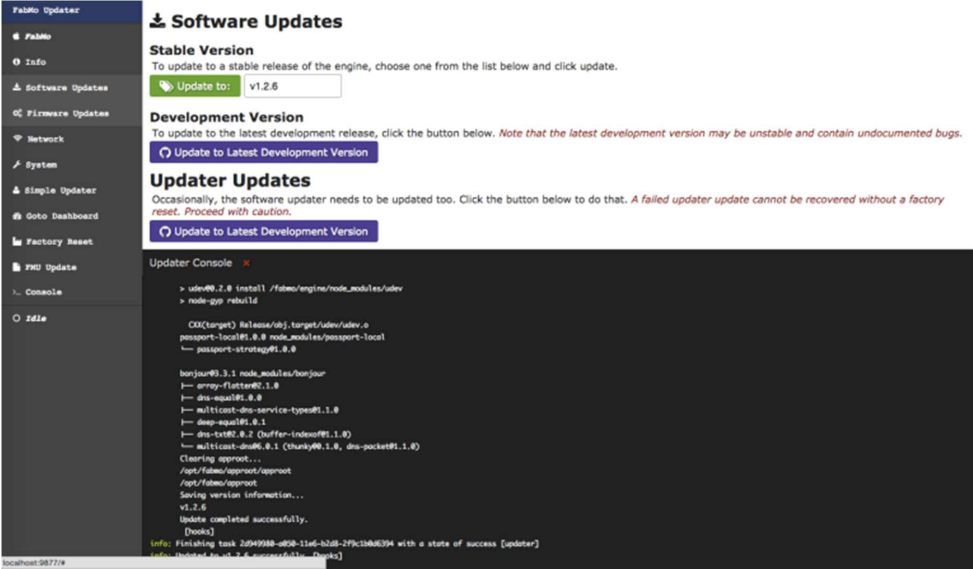






16

A number of messages will run through the updater console, concluding with an “Update successful” message. You can then return to your tool controls by clicking “Goto Dashboard” on the left side bar.



17

Your tool is now internet connectable and up to date!

